

# THE CAMDEN

## 4 BEDROOMS AND 2.5 BATHROOMS

NOTE: PLANS ARE COPY WRITTEN AND MAY NOT BE REPRODUCED OR MODIFIED WITHOUT PERMISSION. CONTRACTOR TO BE RESPONSIBLE FOR PROPER EXECUTION AND COMPLETION OF PROJECT. ALL MEASUREMENTS ARE TO BE FIELD VERIFIED. CONSTRUCTION TO COMPLY WITH THE FOLLOWING CODES, AS WELL AS ALL LOCAL CODES.

BUILDING: 2012 INTERNATIONAL RESIDENTIAL CODE (IBC), WITH GA AMENDMENTS.  
 FIRE SAFETY: 2012 INTERNATIONAL FIRE CODE (IFC), WITH GA AMENDMENTS.  
 PLUMBING: 2012 INTERNATIONAL PLUMBING CODE (IPC), WITH GA AMENDMENTS.  
 MECHANICAL: 2012 INTERNATIONAL MECHANICAL CODE (IMC) WITH GA AMENDMENTS.  
 FUEL GAS: 2012 INTERNATIONAL FUEL GAS CODE (IFGC), WITH GA AMENDMENTS.  
 ELECTRICAL: 2011 NATIONAL ELECTRICAL CODE

### DRAWING INDEX

- A0.0 COVER
- A1.1 PROPOSED FLOOR PLAN
- A2.1 PROPOSED ELEVATIONS
- A3.1 PROPOSED ELEVATIONS
- A4.1 ROOF PLAN
- A5.1 CEILING FRAMING PLAN
- A6.1 ROOF FRAMING PLAN
- A7.1 FOUNDATION PLAN
- A8.1 WALL SECTIONS
- E1.1 ELECATICAL PLAN

### 24-HOUR CONTACT

NAME: WILLIAM VERHEY  
 ADDRESS: SUMMIT DESIGN/BUILD  
 105 LIGHTHORSE BLVD  
 McDONOUGH, GA 30252  
 PHONE: 770-957-8114  
 EMAIL: BRIAN.SUMMIT@GMAIL.COM  
 WEBSITE: [www.SUMMITDESIGNBUILD.COM](http://www.SUMMITDESIGNBUILD.COM)



RELEASED FOR CONSTRUCTION

DRAWN BY: WHV  
 ~ PHASE ~  
 DATE: XXXX/XXX  
 REVISIONS:  
 DATE PRINTED: 6/13/2014 @ 10:10:58 AM

**Wellspring Designs**  
 BUFORD, GA 30519  
 Office: 404-502-1201  
[www.WellSpringDesigns.org](http://www.WellSpringDesigns.org)  
[William@WellSpringDesigns.org](mailto:William@WellSpringDesigns.org)



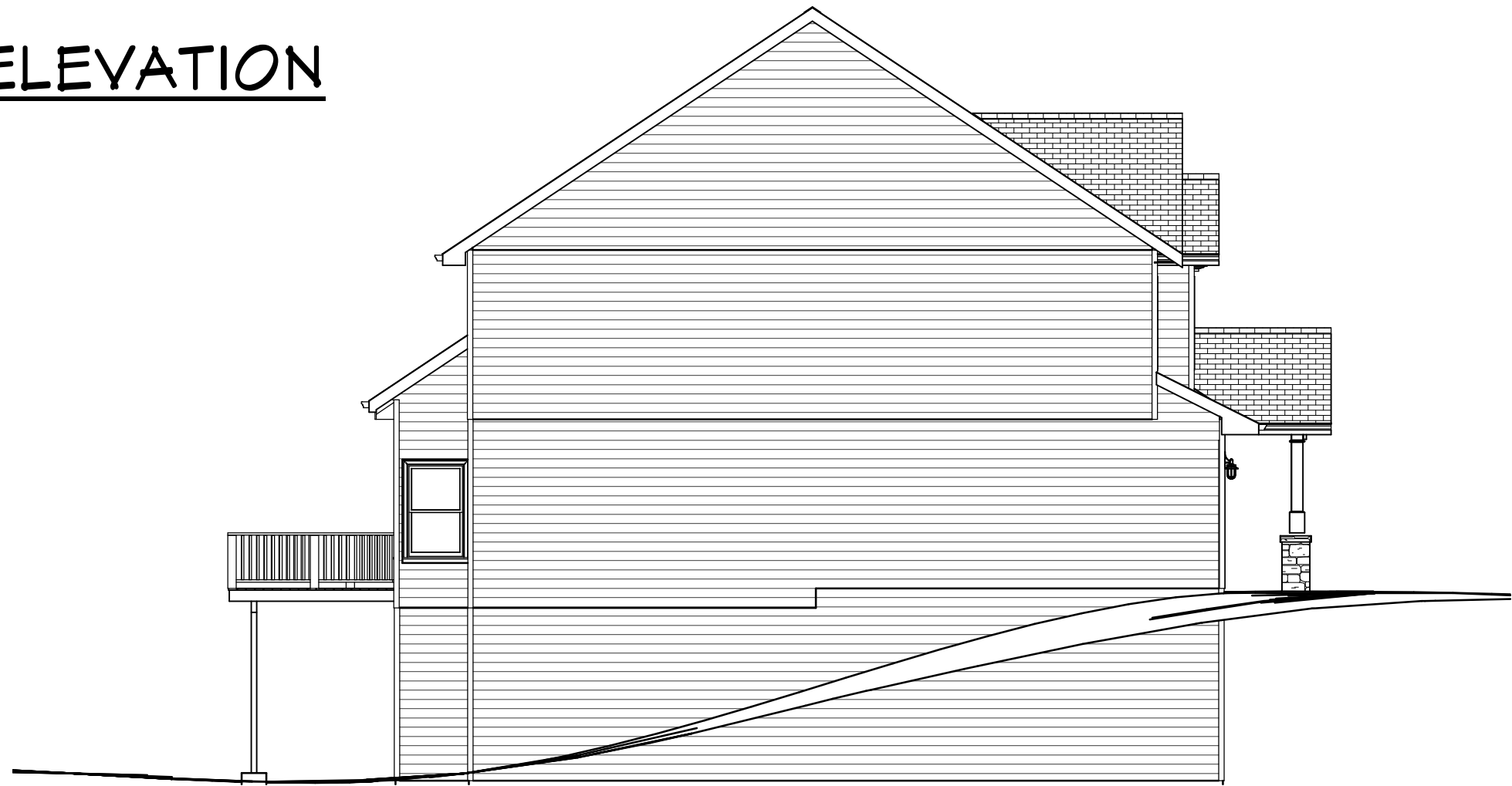
NEW HOME PLANS FOR:

THE CAMDEN

A0.0



FRONT ELEVATION



LEFT ELEVATION

1 PROPOSED PLAN  
 A2.1 Scale: 1/8" = 1'-0"

RELEASED FOR CONSTRUCTION

DRAWN BY: WHV  
 ~ PHASE ~  
 DATE: XX/XX/XXX  
 REVISIONS:  
 DATE PRINTED: 6/13/2014 @ 10:10:58 AM

**WellSpring Designs**  
 BUFORD, GA 30519  
 Office: 404-502-1201  
 www.WellSpringDesigns.org  
 William@WellSpringDesigns.org



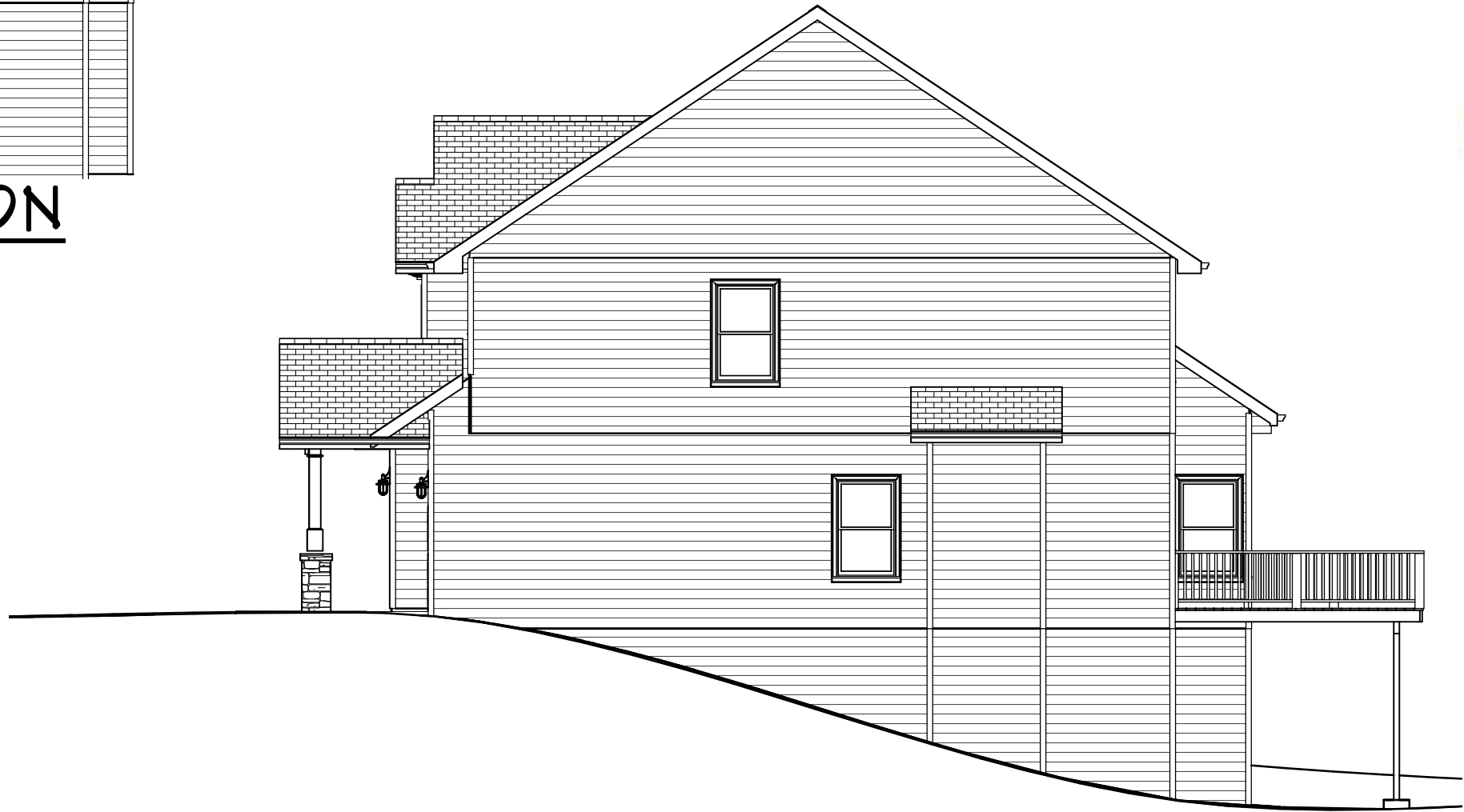
NEW HOME PLANS FOR:  
THE CAMDEN

A2.1

3 of 23



**REAR ELEVATION**



**RIGHT ELEVATION**

1 PROPOSED PLAN  
 A3.1 Scale: 1/8" = 1'-0"

RELEASED FOR CONSTRUCTION

DRAWN BY: WHV
~ PHASE ~
DATE: XXXX/XXX
REVISIONS:
DATE PRINTED: 6/13/2014 @ 10:10:59 AM

**Wellspring Designs**  
 BUFORD, GA 30519  
 Office: 404-502-1201  
 www.WellSpringDesigns.org  
 William@WellSpringDesigns.org



NEW HOME PLANS FOR:  
**THE CAMDEN**

**A3.1**



RELEASED FOR CONSTRUCTION

DRAWN BY: WHV  
 ~ PHASE ~  
 DATE: XX/XX/XX  
 REVISIONS:  
 DATE PRINTED: 6/13/2014 @ 10:10:59 AM

**WellSpring Designs**  
 BUFORD, GA 30519  
 Office: 404-502-1201  
[www.WellSpringDesigns.org](http://www.WellSpringDesigns.org)  
[William@WellSpringDesigns.org](mailto:William@WellSpringDesigns.org)



NEW HOME PLANS FOR:  
**THE CAMDEN**



RELEASED FOR CONSTRUCTION

DRAWN BY: WHV  
 ~ PHASE ~  
 DATE: XX/XX/XXX  
 REVISIONS:

DATE PRINTED: 6/13/2014 @ 10:10:59 AM

**WellSpring Designs**  
 BUFORD, GA 30519  
 Office: 404-502-1201  
[www.WellSpringDesigns.org](http://www.WellSpringDesigns.org)  
[William@WellSpringDesigns.org](mailto:William@WellSpringDesigns.org)



NEW HOME PLANS FOR:  
**THE CAMDEN**



RELEASED FOR CONSTRUCTION

DRAWN BY: WHY  
~ PHASE ~  
DATE: XXXX/XXX  
REVISIONS:

DATE PRINTED: 6/13/2014 @ 10:10:59 AM

**WellSpring Designs**  
BUFORD, GA 30519  
Office: 404-502-1201  
www.WellSpringDesigns.org  
William@WellSpringDesigns.org



NEW HOME PLANS FOR:  
**THE CAMDEN**



**RELEASED FOR CONSTRUCTION**

DRAWN BY: WHY  
 ~ PHASE ~  
 DATE:  
 XX/XX/XXX  
 REVISIONS:

DATE PRINTED: 6/13/2014 @ 10:10:59 AM

**WellSpring Designs**  
 BUFORD, GA 30519  
 Office: 404-502-1201  
[www.WellSpringDesigns.org](http://www.WellSpringDesigns.org)  
[William@WellSpringDesigns.org](mailto:William@WellSpringDesigns.org)



NEW HOME PLANS FOR:  
**THE CAMDEN**